

FERROUS ALLOY MINERALIZATION. PYRITE AND OTHER METAL SULFIDES

Mostra

Metal handles of wooden casks. medieval leather industry. Molí de Codina (Tarrega- L'Urgell)

<o:p></o:p>

Causes de la patologia

Le chemical transformation of donkeys iron product of two factors: the burial environment and contact with the wooden bucket. This mineralization dominated sulphides of iron, can be related to the archaeological site of the burial environment: low in oxygen (Anoxic) with the presence of abundant water, possibly under the underground water table, and in addition to the incidence of bacteria and anaerobic microorganisms, especially the type sulfureductores. The chemical components of the wood also involved in the process.

Imatge de visu



Autor: Museu Comarcal de l'Urgell-Tarrega

Descripció: It looks at the remains of a metal ring in an old bucket tanning fully transformed chemically. Surrounded by a concrete calcium carbonate original iron metal ring that was turned into a mass of mineral sulfides, carbonates and iron oxides. Not detected remnants of the original iron alloy.

Imatge detalli / macro



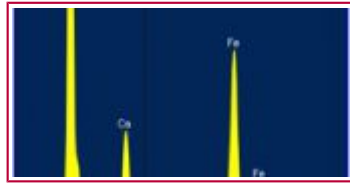
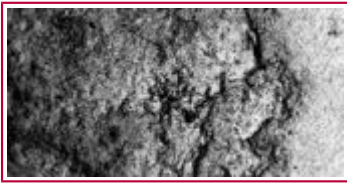
Autor: Cetec-patrimoni

Augments: 10x

Descripció: Internal structure are observed following layers:

- 1: surface layer of brown tones people, yellow - Golden and black.
 - 2: internal or core layer of gray and microcrystalline texture and compact.
 - 3 Layer yellow - golden. It microcrystalline texture thick microporous.
 - 4: Set of thin laminated layers composed of iron ore and waste wood.
-

Imatge Microscòpia



Autor: 1.- CETEC-p 2.- CETEC-p

Augments: 1.-Back - Scattered Electron Imaging (BSEI) 450X 2.- Spectrum XEDS -SEM image 1

Descripció: 1.-Image of a section of the sample. Electron microscopy to observe the inner metallic ring

is mainly composed of massive compact iron sulfides (pyrite), and is surrounded by a layer of calcium carbonate. But it has a yellowish core and spray with some degree of disaggregation, probably due to alteration processes of iron sulfide minerals (pyrite) that make up the inner core.

Patologies associades

Granular disintegration, sanding, flaking

Altres anàlisis



X ray radiography

Observacions

X ray radiography. Diferencia Note the density and brightness of different layers: The outer brighter corresponds to the concretion of calcium carbonate. The interlayer less bright, gray - brown is corresponding to a metal ring mineralized. The darker background layer with black dots are the remains of the wood.

Bibliografia

- Lyndsie Selwyn. Métaux et corrosion. Ed: Institut Canadien de Conservation (ICC). Ottawa –Canada. 2004.

- Colin Pearson. Conservation of Marine Archaeological objects. Ed: Butterworths. UK. Oxford 1987.

Autor

Jose Luis Prada Pérez. prada43@wanadoo.es

Geologo

Institució o Empresa

ESCRBCC
